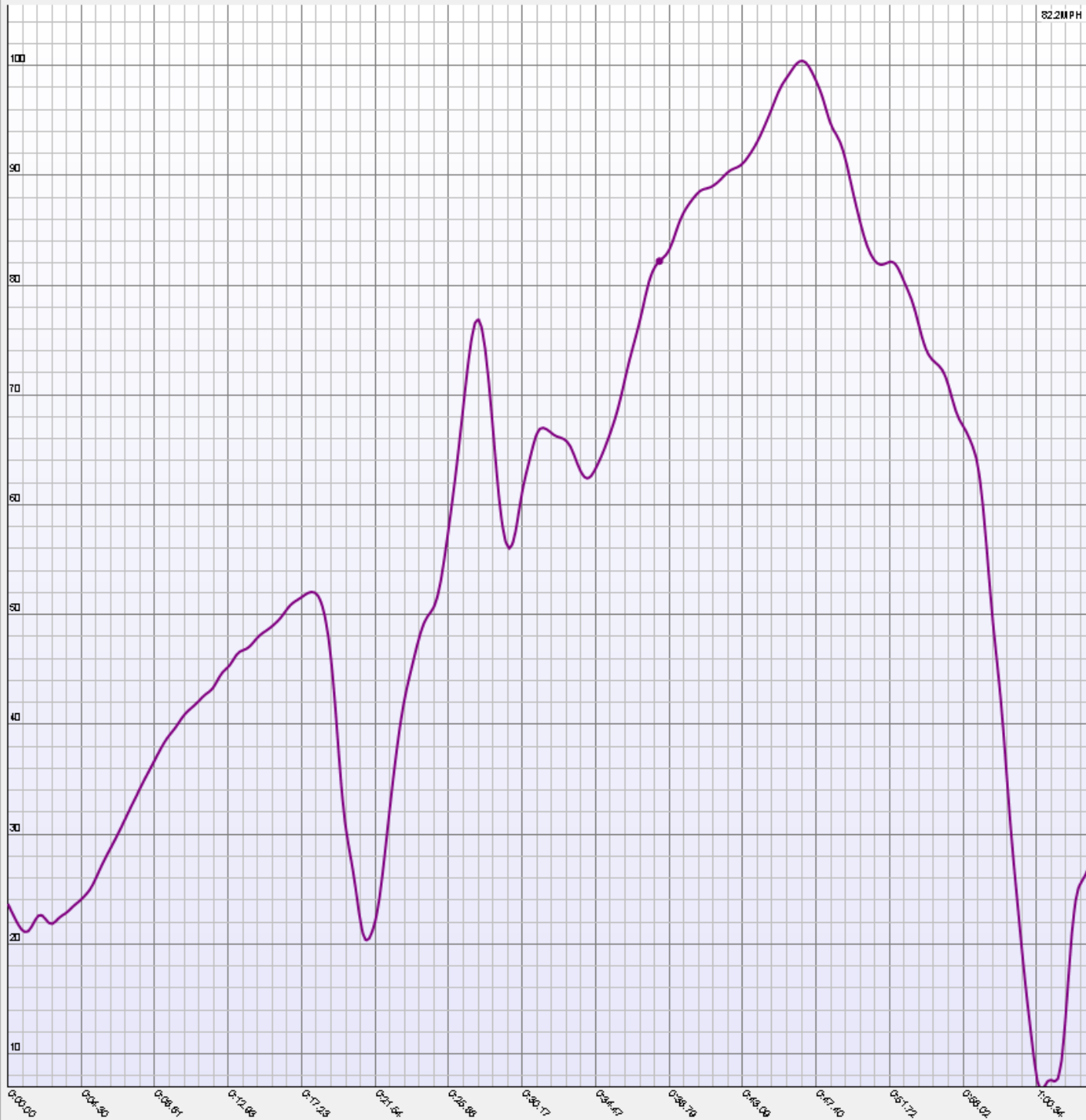


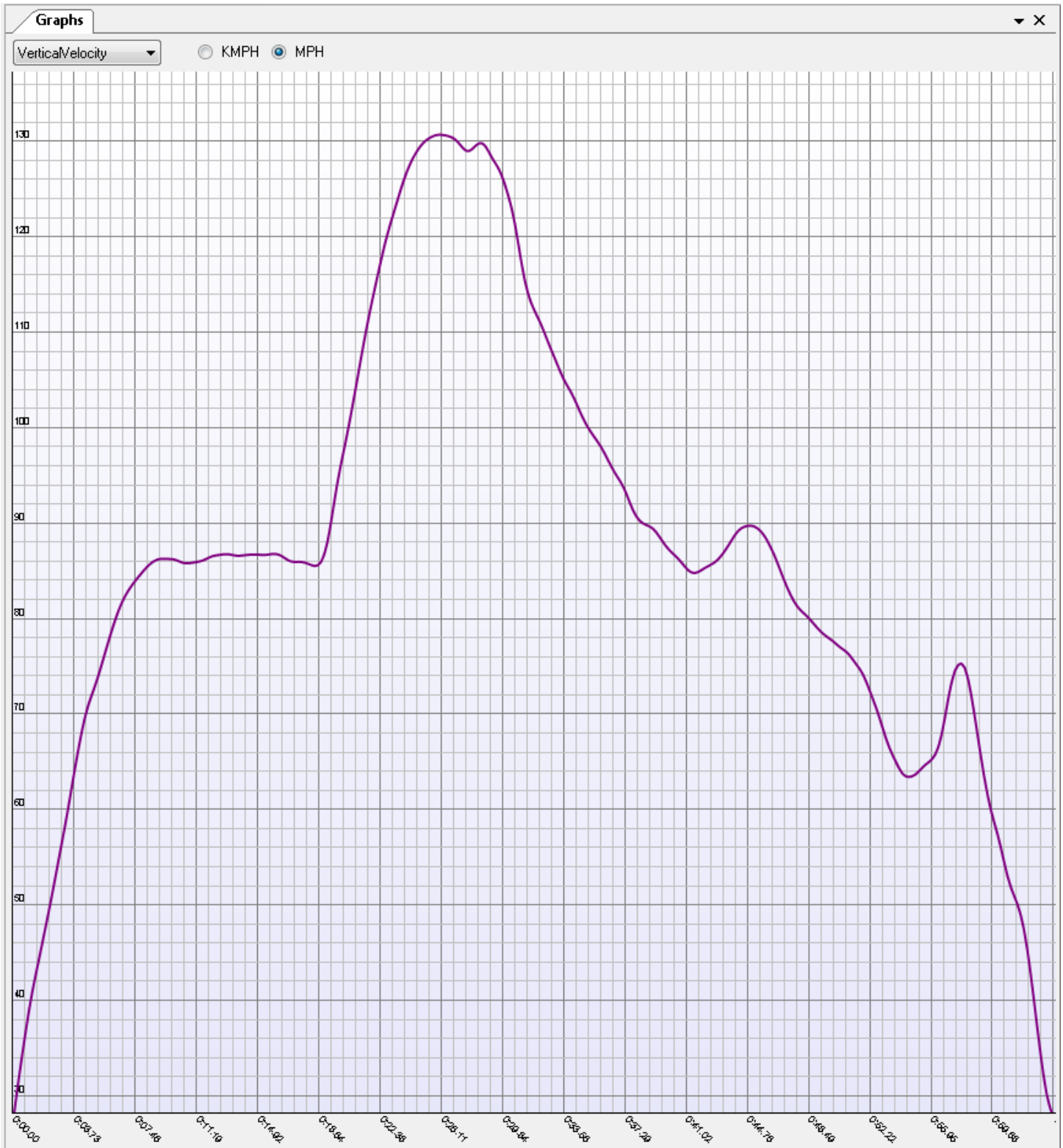
HorizontalVelocity

KMPH MPH

82.2MPH

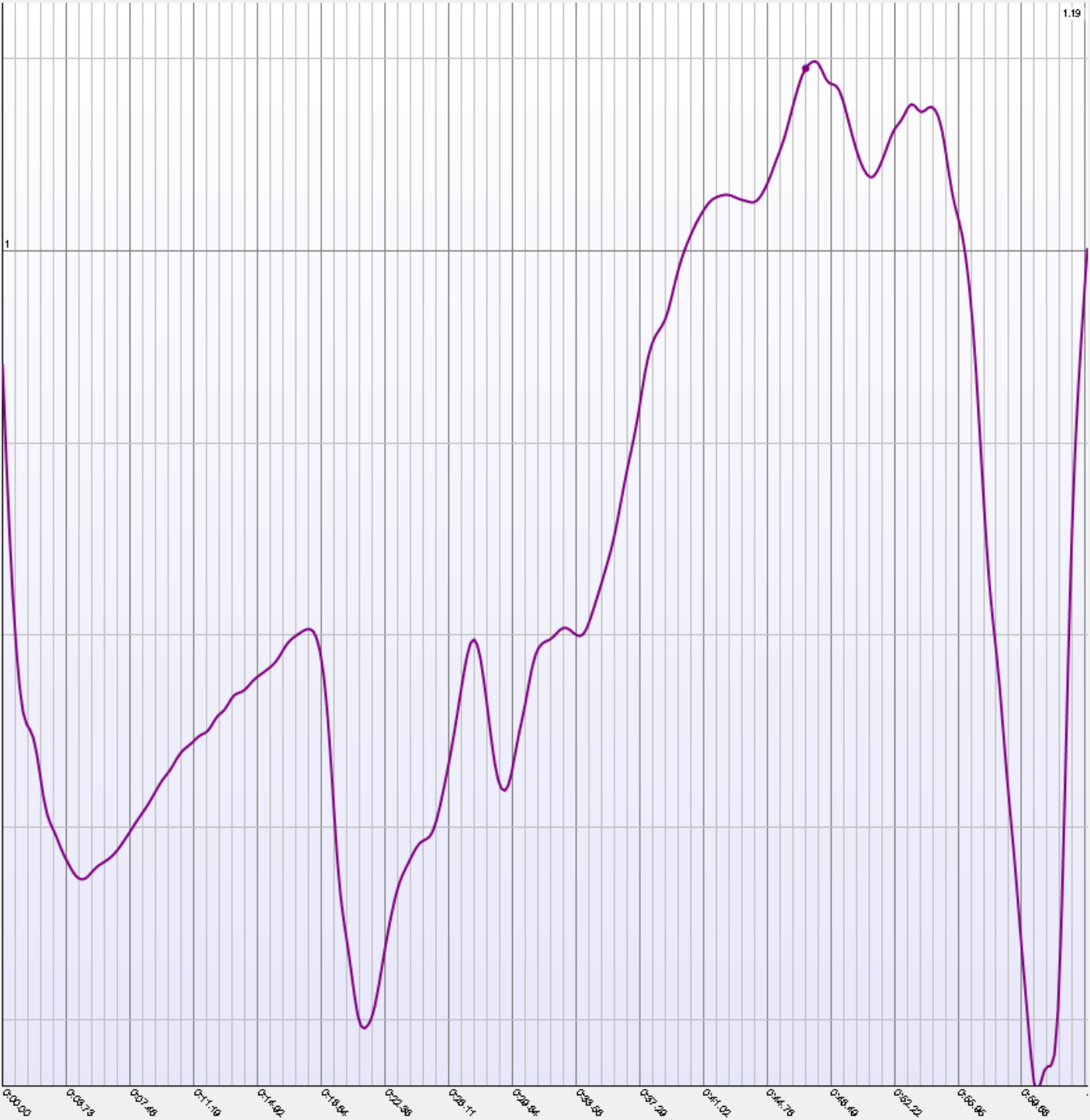


The first 17 seconds were with the jump run, then some yaw rotating that I had issues with, going down fast.

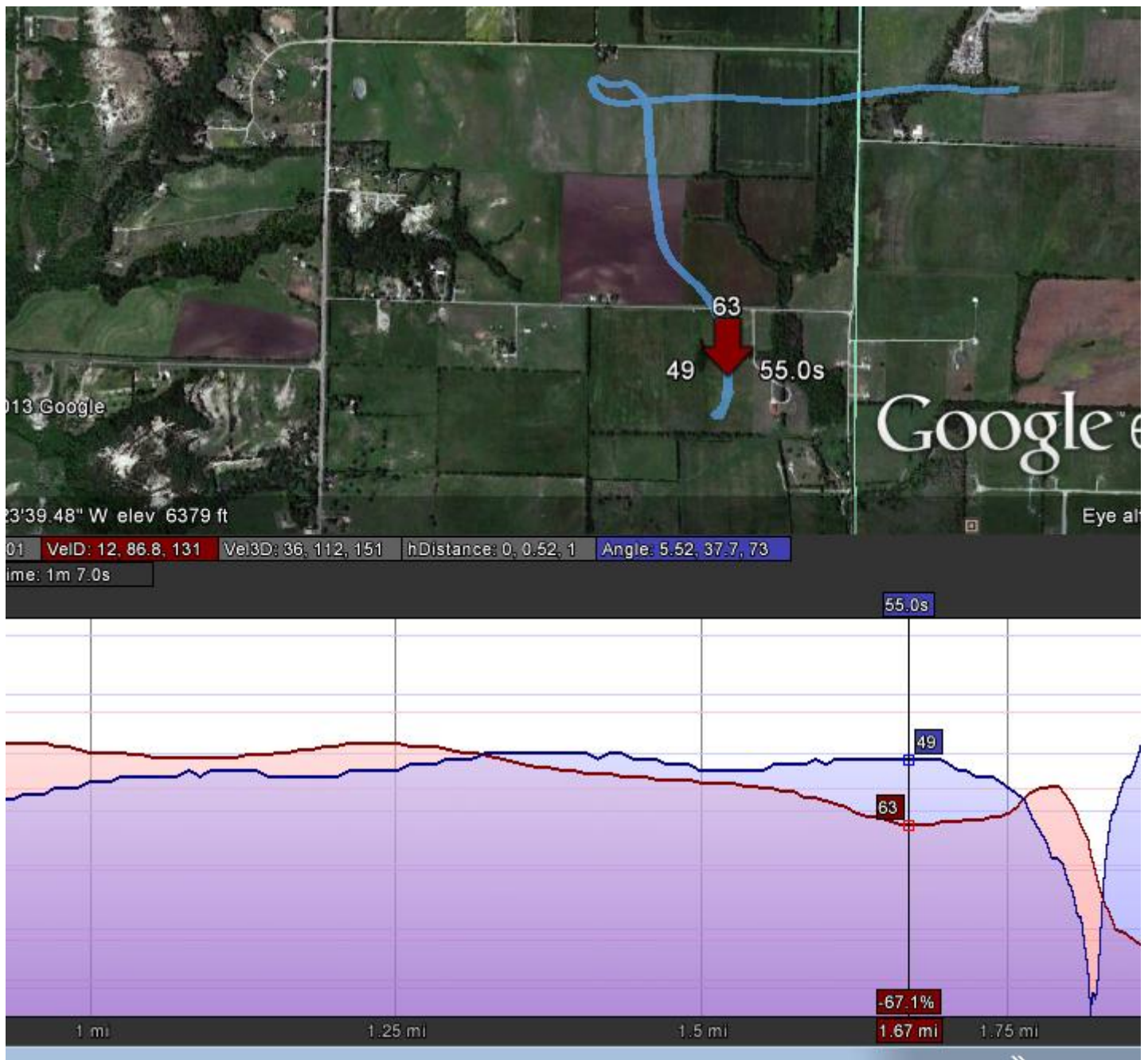


GlideRatio

1.19



The fat blue line is the track through 3D space, so the viewing angle has it distorted a little compared to the track if laid flat on the ground. Note Velocity Down and Angle (glide ratio represented as an angle) graphs are shown. At the 55 second point Velocity Down is 63 MPH and Angle is 49 degrees. This is right before deployment.



I am able to really study and understand aspects of the flight better with the way the data is presented. I had some control problems and was going down pretty fast for a time early in the flight. I can see that before deployment I had my vertical speed fairly constant and the horizontal speed was gradually slowing .

